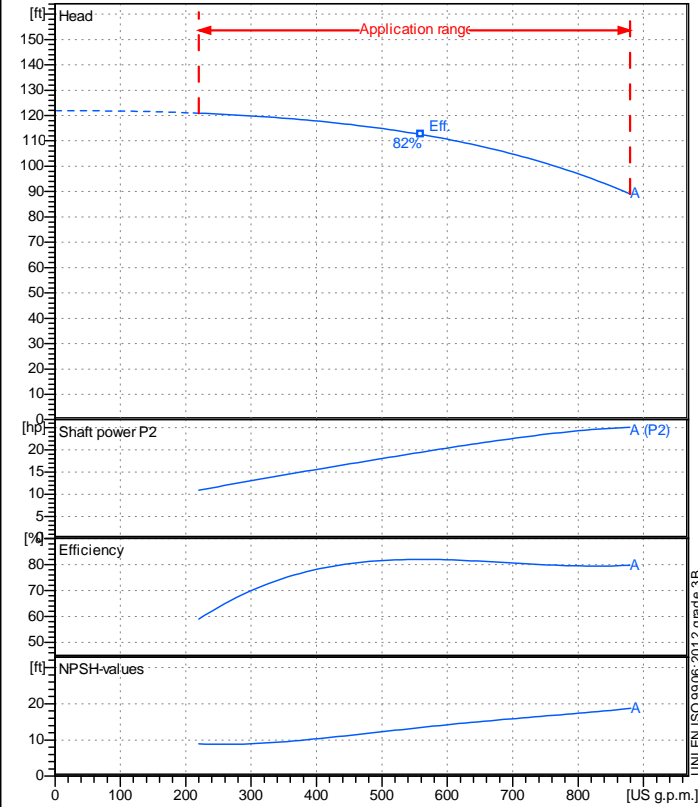


Company name
 Respons. Department
 Person in charge
 Phone number
 Fax no
 E-mail address

Receiver

From


Operating data specification

Nominal flow	US g.p.m. 0
Nominal head	ft 0
Static head	ft 0
NPSH - v value of plant	ft 0
Inlet pressure	psi 1.42
Fluid	Water, pure
Operating temperature t A	°F 68
Density at t A	lb/ft³ 62.32
Kin. viscosity at t A	ft²/s 1.082E-5

Pump

Pump name		6MG4-4P 80-250A	
Size		100/80/200	
Design			
Speed rpm	1800	No of stages	1
Impeller type			
Flow	Nominal	US g.p.m.	
	Max-	US g.p.m. 880	
	Min-	US g.p.m. 220	
Head	Nominal	ft	
	Max-	ft 121	
	Min-	ft 89.1	
Head H(Q=0)		ft 122	
NPSH 3%		ft	
Max. working pressure		psi 52.7	
Shaft power		hp	
Efficiency		%	
Max absorbed power		hp 25.12	

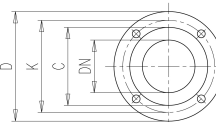
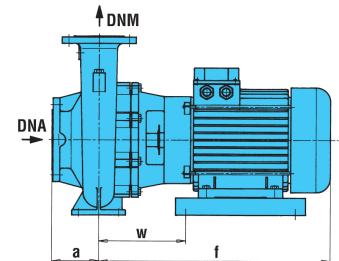
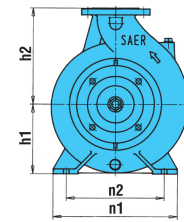
Materials Pump

Shaft	Stainless steel AISI 431 (1.4057)
Impeller	Cast iron EN-GJL-250
Pump body	Cast iron EN-GJL-250
Seal disc	Cast iron EN-GJL-250
Gasket	Natural fiber
Mechanical seal	BVEG (Grafite/Ossido Allumina/EPDM)

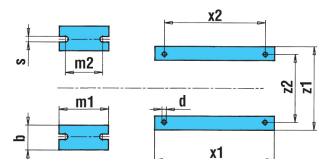
Motor	Frame size	180 L		
Manufacturer / Type	SAER	MEC180L-4P-18.5		
Rated power	hp	24.809	Efficiency 4/4	86 %
Electric current	A	32 A	Speed rpm	1800
Electric voltage	V	460V	3~ Hz	60
Starting mode	Unknown			
Degree of protection	IP 55	Insulation class	F	

Dimensions in inch

a	4 ¹⁵ / ₁₆	z1	13 ⁹ / ₁₆
b	3 ¹ / ₈	z2	11
d	9 ¹ / ₁₆		
DNA	3 ¹⁵ / ₁₆		
DNM	3 ¹ / ₈		
f	28 ¹ / ₂		
h1	7 ⁷ / ₈		
h2	11		
m1	6 ⁵ / ₁₆		
m2	4 ³ / ₄		
n1	15 ³ / ₄		
n2	12 ³ / ₈		
s	1 ¹ / ₁₆		
w	7 ¹¹ / ₁₆		
x1	16 ¹ / ₈		
x2	14 ⁹ / ₁₆		



C	5 ⁷ / ₁₆	C	6 ¹ / ₄
D	7 ⁷ / ₈	D	8 ¹¹ / ₁₆
DN	3 ¹ / ₈	DN	3 ¹⁵ / ₁₆
K	6 ⁹ / ₁₆	K	7 ¹ / ₁₆
n°	3 ¹ / ₁₆	n°	5 ¹ / ₁₆
Øn	3 ¹ / ₄	Øn	3 ¹ / ₄



Remarks:

Project	Project ID	Created by	Created on 2022-09-26	Last update
---------	------------	------------	---------------------------------	-------------

Receiver

From

 Company name
 Respons. Department
 Person in charge
 Phone number
 Fax no
 E-mail address

Operating area

Flow

Head

Impeller type

Operating data specification

0 US g.p.m.

0 ft

Impeller construction

Closed

Pump data

US g.p.m.

ft

Sense of rotation

Clockwise from the drive end

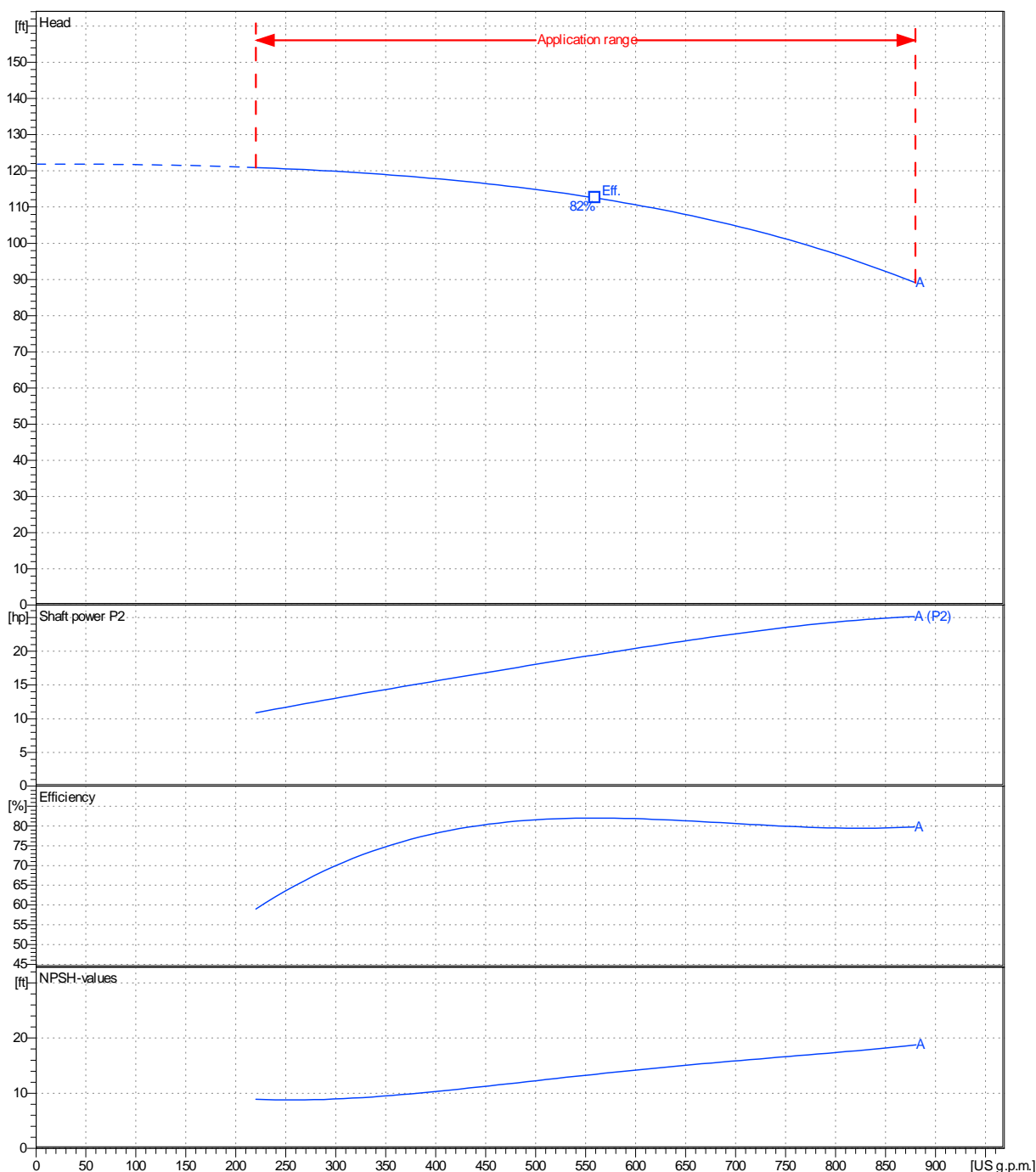
Outlet width

DN 80

	Flow			Head		Shaft power P2			Speed	
	Min.	Max.	η Max.	H(Q=0)	η Max.	P2(Q=0)	Max.	η Max.	rpm	1800
	US g.p.m.	US g.p.m.	US g.p.m.	ft	ft	hp	hp	hp	Hz	60 Hz
	220	880	559	122	113		25.1	19.5		

 Performance data based to: Water, pure [100%]; 68°F; 62.3lb/ft³; 1.08E-5ft²/s

UNI EN ISO 9906:2012 - Grade 3B



Project

Project ID

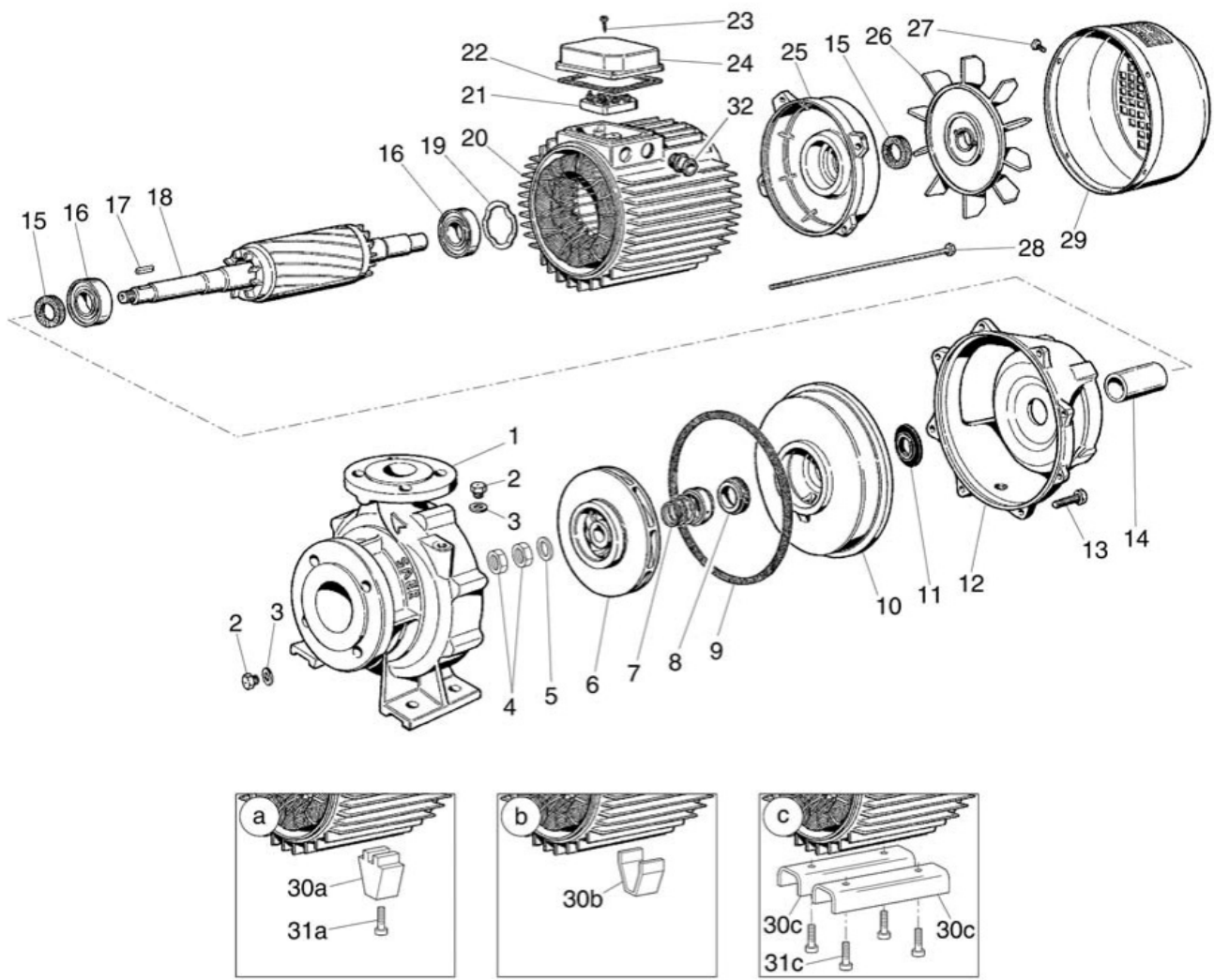
Created by

Created on

Last update

2022-09-26

Company name
Respons. Department
Person in charge
Phone number
Fax no
E-mail address



Project

Project ID

Created by

Created on
2022-09-26

Last update